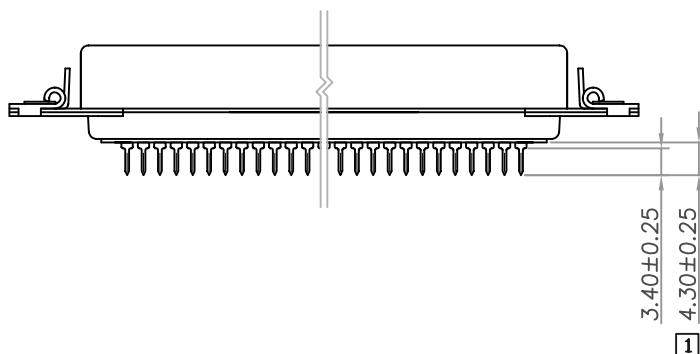
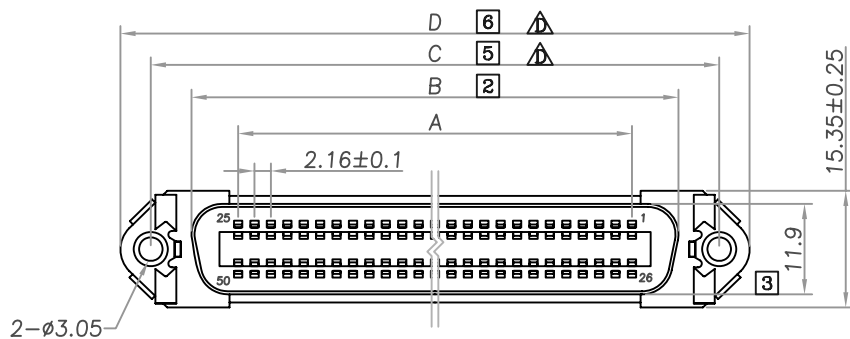
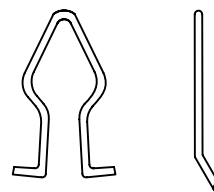


RoHS COMPLIANT

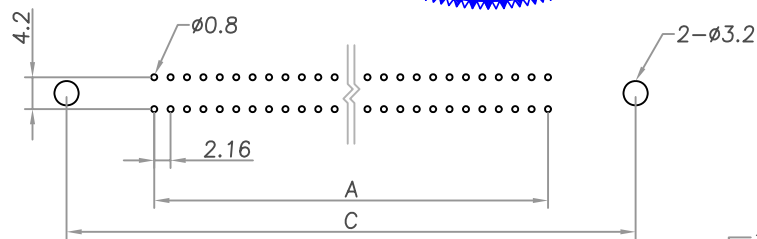
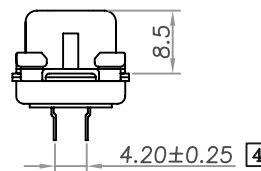
REV	DATE	DESCRIPTION
C	07/21/'17	Update
D	08/14/'17	新增重點尺寸C D



Positions	A	B	C	D
14	12.96	25.2	36.0	44.1
24	23.76	36.0	46.8	54.9
36	36.72	48.9	59.7	67.9
50	51.84	64.1	74.9	83.0



APPOSE SPRING LATCH
x2PCS



RECOMMEND PCB LAYOUT

包裝方式
0: 盤裝
1: 單PCS包

Material & Finish

SHELL:

Steel, Nickel Plated Steel

PIN CONTACT:

Phosphor Bronze
Gold Flash Plated

INSULATOR:

PBT & Glass-fibre reinforced
UL-94-V0 Blue

CURRENT RATING:

3 Amp

CONTACT RESISTANCE:

30mΩ

DIELECTRIC STRENGTH:

1000VAC for one minute

INSULATOR RESISTANCE:

1000MΩ Min. (at 500VDC)

TEMPERATURE:

-55°C to +105°C

FU-YAO TECHNOLOGY CO., LTD.
復堯科技股份有限公司

MODEL NAME:
CENTRONIC PCB S/T TYPE FEMALE
4.2, APPOSE SPRING LATCH

MARK EXPLAIN:
⚠:Revision Change
1:Important Dimension
①:Note

TOLERANCE:
0.000:
0.00 : ±0.20
0.0 : ±0.30
0. : ±0.40
ANGLE: ±3.0°

UNIT: mm

PART NO. RS4-xxSBAAD2000
APPROVED BY: ALBERTA
CHECKED BY: EDEA
DRAW BY: ALAN

FILE NO. FIG02408
SCALE: 1/1
DATE: 1000210