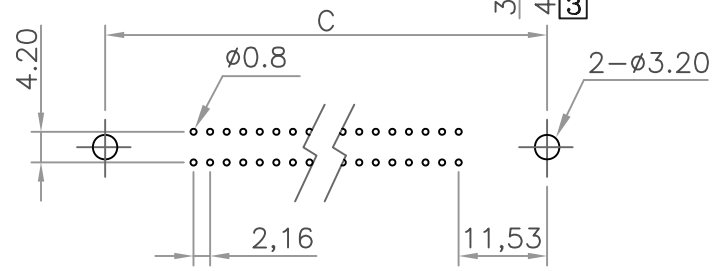
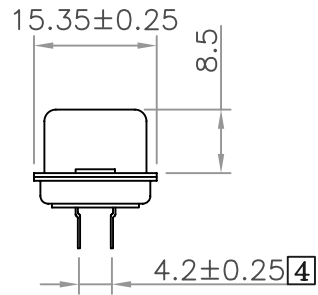
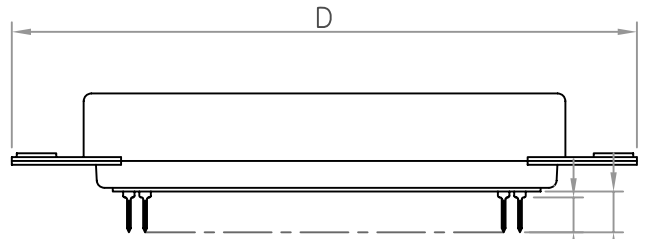
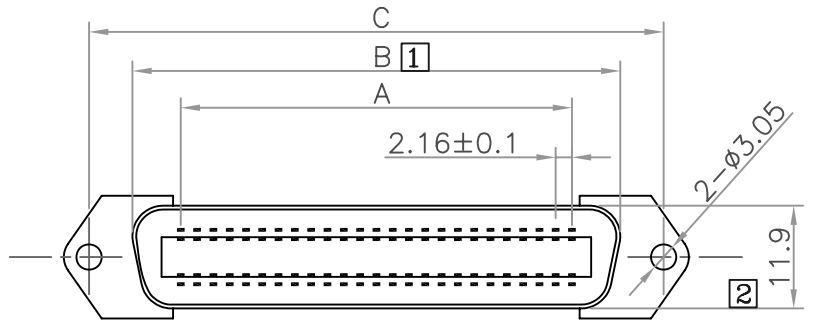


RoHS COMPLIANT

REV	DATE	DESCRIPTION
D	04/10/'03	RS2-xxSXXAM
E	04/13/'09	Official Drawing



PCB Layout

### Material & Finish

- SHELL:**  
Steel  
Zinc plated, Tin plated  
or Nickel plated steel
- PIN CONTACT:**  
Phosphor bronze or Brass  
Gold plated
- INSULATOR:**  
PBT & Glass-fibre reinforced  
UL-94-V0
- NUMBER OF CONTACT:**  
14,24,36,50
- CURRENT RATING:**  
5 Amp
- DIELECTRIC STRENGTH:**  
1000V for one minute
- INSULATOR RESISTANCE:**  
1000MΩ Min. (at 500V DC)
- TEMPERATURE:**  
-55° C to +105° C



Positions	A	B	C	D
14	12.96	25.2	36.0	43.9
24	23.76	36.0	46.8	54.7
36	36.72	48.9	59.7	67.7
50	51.84	64.1	74.9	82.8

FU-YAO TECHNOLOGY CO., LTD.  
復堯科技股份有限公司

MODEL NAME:  
CENTRONIC P.C.B. S/T TYPE FEMALE  
ROW PITCH 4.2mm

MARK EXPLAIN:  
△:Revision Change  
1:Important Dimension  
①:Note

TOLERANCE:  
0.000 : ±0.20  
0.0 : ±0.30  
0. : ±0.40  
ANGLE: ±3.0°  
UNIT: mm

PART NO. RS2-xxSXXXD0000  
APPROVED BY: \_\_\_\_\_ FILE NO.FIG00797  
CHECKED BY: \_\_\_\_\_ SCALE: FREE  
DRAW BY: KAO DATE : 891020