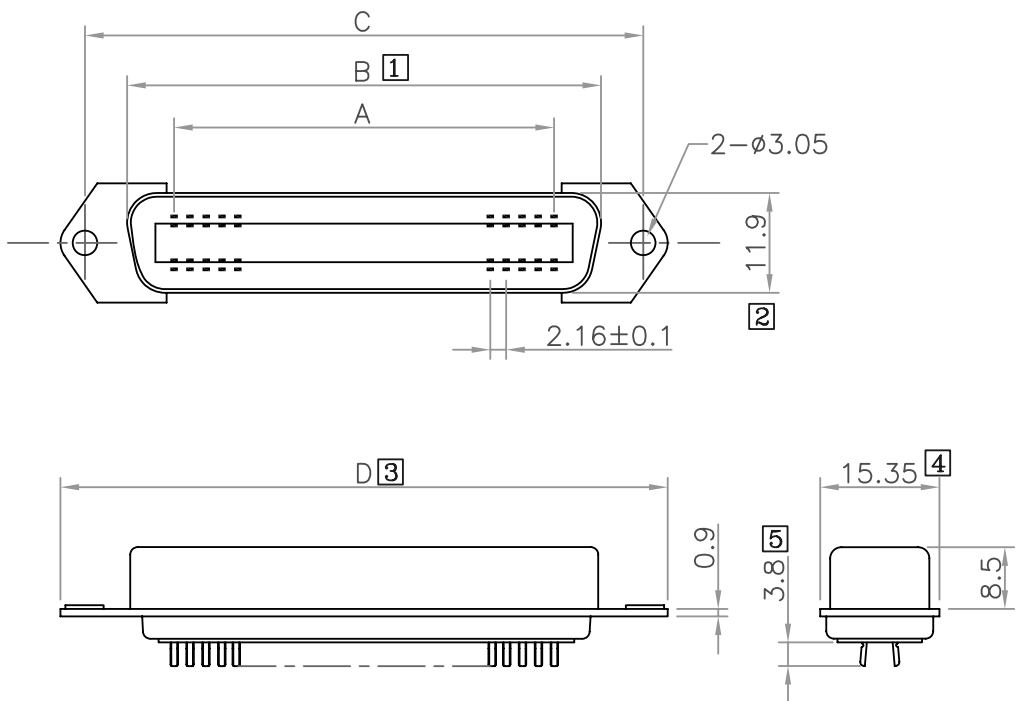


RoHS COMPLIANT

REV	DATE	DESCRIPTION
C	12/09/'02	RC2-xxSXAAA
D	01/08/'09	Official Drawing



Positions	A	B	C	D
14	12.96	25.2	36.0	43.9
24	23.76	36.0	46.8	54.7
36	36.72	48.9	59.7	67.7
50	51.84	64.1	74.9	82.8

Material & finish

SHELL:

Steel
Zinc plated, Tin plated
or Nickel plated steel

PIN CONTACT:

Phosphor bronze or brass
Gold plated

INSULATOR:

PBT & Glass-fibre reinforced
UL-94-V0

NUMBER OF CONTACT:

14,24,36,50

CURRENT RATING:

5 Amp

DIELECTRIC STRENGTH:

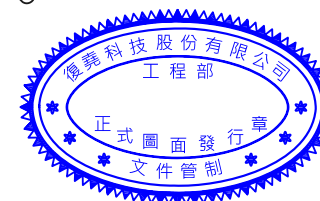
1000V for one minute

INSULATOR RESISTANCE:

1000MΩ Min. (at 500V DC)

TEMPERATURE:

-55° C to +105° C



FU-YAO TECHNOLOGY CO., LTD.

復堯科技股份有限公司

MODEL NAME:

CENTRONIC SOLDER TYPE FEMALE

MARK EXPLAIN:

- ▲:Revision Change
- ①:Important Dimension
- ①:Note

TOLERANCE:

0.000:
0.00 : ±0.20
0.0 : ±0.30
0 : ±0.40
ANGLE: ±3.0°

UNIT: mm

PART NO. RC2-xxSBXXA00000

APPROVED BY:

CHECKED BY:

DRAW BY:

Jarvis

FILE NO. FIG00024

SCALE: FREE

DATE : 971231