

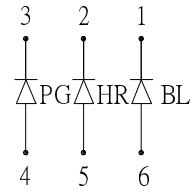
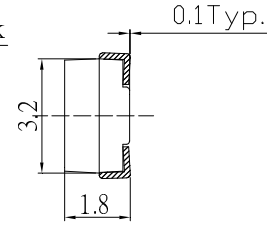
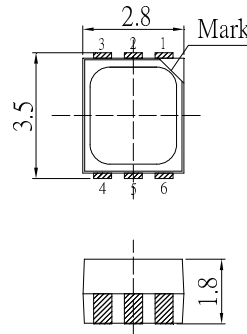
■Features

- High Luminous PLCC6 Top SMD LEDs
- 3.5x2.8x1.8mm Standard Directivity
- UV Resistant Silicone Resin
- Water Clear Type

■Applications

- Toys/Games/Audio
- Small Area Illuminations
- Back Lighting/Other Lighting

■Outline Dimension



Unit: mm
Tolerance: ±0.20mm
unless otherwise noted

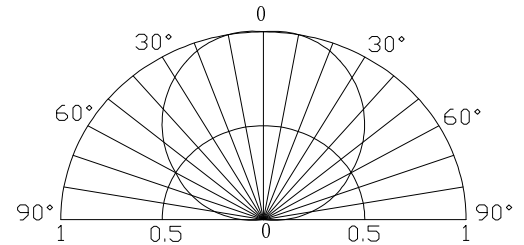
1,2,3.Cathode
4,5,6.Anode

■Absolute Maximum Rating (Ta=25°C)

(Ta=25°C)

Item	Symbol	Value		Unit
		Red	Green/Blue	
DC Forward Current	I _F	25	25	mA
Pulse Forward Current*	I _{FP}	100	100	mA
Reverse Voltage	V _R	5	5	V
Power Dissipation	P _D	65	90	mW
Operating Temperature	T _{opr}	-30 ~ +100		°C
Storage Temperature	T _{stg}	-40 ~ +100		°C
Lead Soldering Temperature	T _{sol}	260°C/10sec		-

■Directivity



*Pulse width Max.10ms Duty ratio max 1/10

■Electrical -Optical Characteristics (Ta=25°C)

(Ta=25°C)

Item	Symbol	Condition	Min.	Typ.	Max.	Unit
DC Forward Voltage	V _F (R)	I _F =20mA	1.8	2.1	2.6	V
	V _F (B/G)	I _F =20mA	2.8	3.1	3.6	V
DC Reverse Current	I _R	V _R =5V	-	-	10	μA
Domi. Wavelength*	λ _D (Red)	I _F =20mA	620	625	630	nm
	λ _D (Green)	I _F =20mA	515	520	525	nm
	λ _D (Blue)	I _F =20mA	465	470	475	nm
Luminous Intensity*	I _v (Red)	I _F =20mA	330	500	-	mcd
	I _v (Green)	I _F =20mA	750	1120	-	mcd
	I _v (Blue)	I _F =20mA	220	330	-	mcd
50% Power Angle	2θ _{1/2}	I _F =20mA	-	120	-	deg

*1 Tolerance of measurements of dominant wavelength is ±1nm

*2 Tolerance of measurements of luminous intensity is ±15%

*3 Tolerance of measurements of forward voltage is ±0.1V

LED & Application Technologies

