

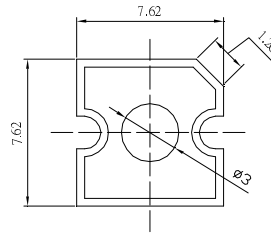
**■Features**

- High Luminous Super Flux Output
- UV Resistant Epoxy
- Long Lifetime Operation
- Water Clear Type

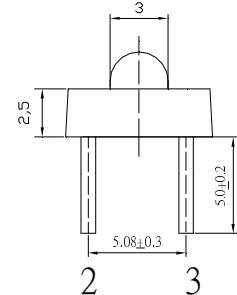
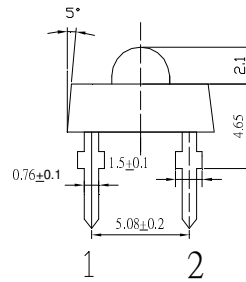
**■Applications**

- Signage and channel letter
- Decorating and entertainment lighting
- Architectural lighting
- Outdoor/Indoor applications

**■Outline Dimension**



Unit:mm  
Tolerance:±0.3mm  
1,4 Anode  
2,3 Cathode

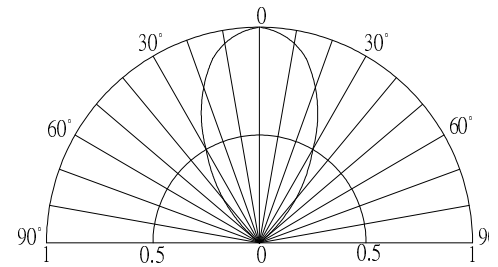


**■Absolute Maximum Rating**

(Ta=25°C)

| Item                       | Symbol           | Value        | Unit |
|----------------------------|------------------|--------------|------|
| DC Forward Current         | I <sub>F</sub>   | 50           | mA   |
| Pulse Forward Current#     | I <sub>FP</sub>  | 100          | mA   |
| Reverse Voltage            | V <sub>R</sub>   | 5            | V    |
| Power Dissipation          | P <sub>D</sub>   | 150          | mW   |
| Operating Temperature      | T <sub>opr</sub> | -30 ~ +85    | °C   |
| Storage Temperature        | T <sub>stg</sub> | -40 ~ +100   | °C   |
| Lead Soldering Temperature | T <sub>sol</sub> | 260°C / 5sec | -    |

**■Directivity**



#Pulse width Max.10ms , Duty ratio max 1/10

**■Electrical -Optical Characteristics**

(Ta=25°C)

| Item                      | Symbol            | Condition            | Min. | Typ. | Max. | Unit |
|---------------------------|-------------------|----------------------|------|------|------|------|
| DC Forward Voltage        | V <sub>F</sub>    | I <sub>F</sub> =30mA | 2.9  | 3.1  | 3.6  | V    |
| DC Reverse Current        | I <sub>R</sub>    | V <sub>R</sub> =5V   | -    | -    | 10   | μA   |
| Luminous Flux*            | Φ <sub>v</sub>    | I <sub>F</sub> =30mA | -    | 11   | -    | lm   |
| Color Temperature         | CCT               | I <sub>F</sub> =30mA | -    | 6500 | -    | K    |
| Chromaticity Coordinates* | x                 | I <sub>F</sub> =30mA | -    | 0.31 | -    |      |
|                           | y                 | I <sub>F</sub> =30mA | -    | 0.33 | -    |      |
| 50% Power Angle           | 2θ <sub>1/2</sub> | I <sub>F</sub> =30mA | -    | 60   | -    | deg  |

\*1 Tolerance of measurements of chromaticity coordinate is ±10%

\*2 Tolerance of measurements of luminous intensity is ±15%

\*3 Tolerance of measurements of forward voltage is±0.1V