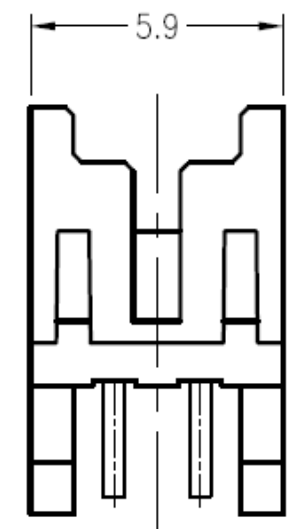
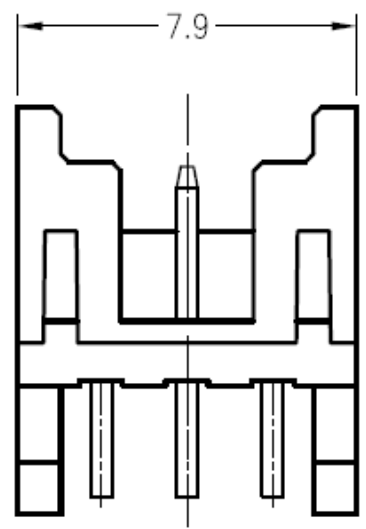
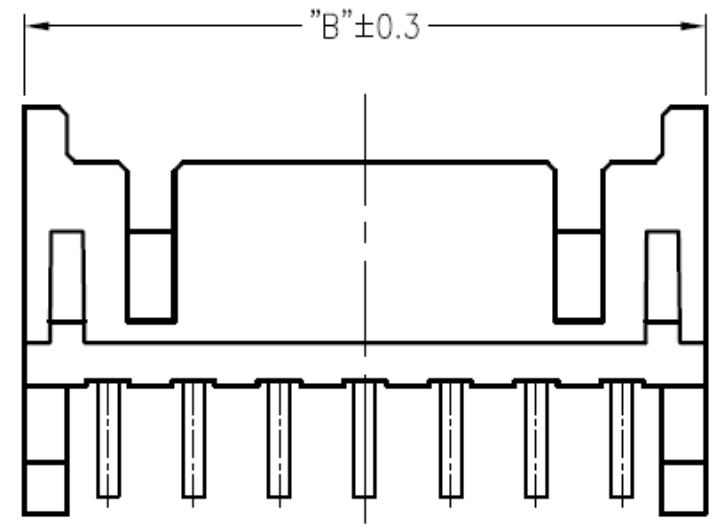
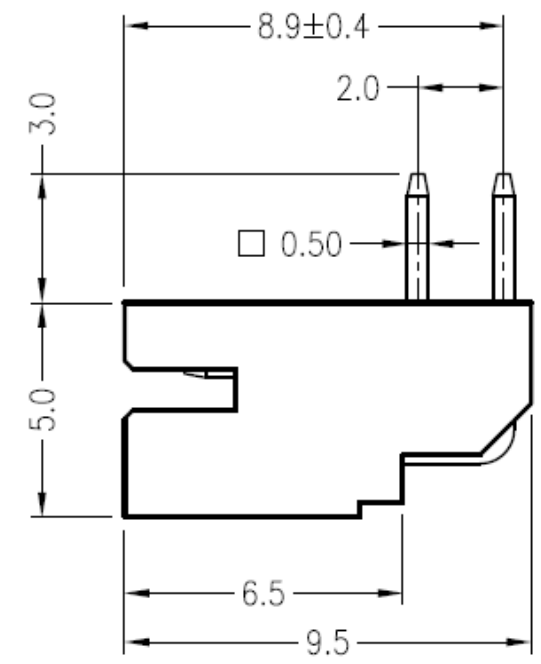
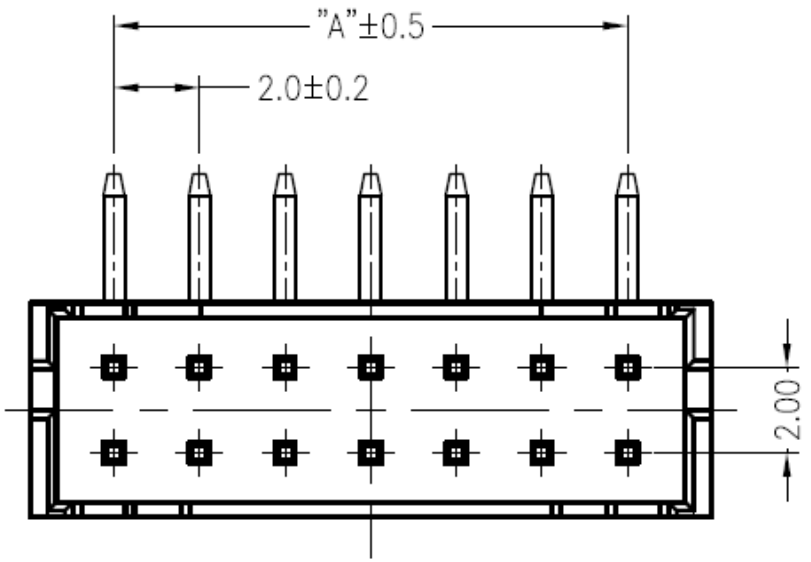


Ordering Information

WG - 1 - XX - PT - E128-1-44

2.0Ph Wafer Solder/PCB 1:DIP RA Total Pin Contact Plated PT: Tin Packaging 1: Bag

RoHS Compliant



2x4P~2x20P

2x3P

2x2P

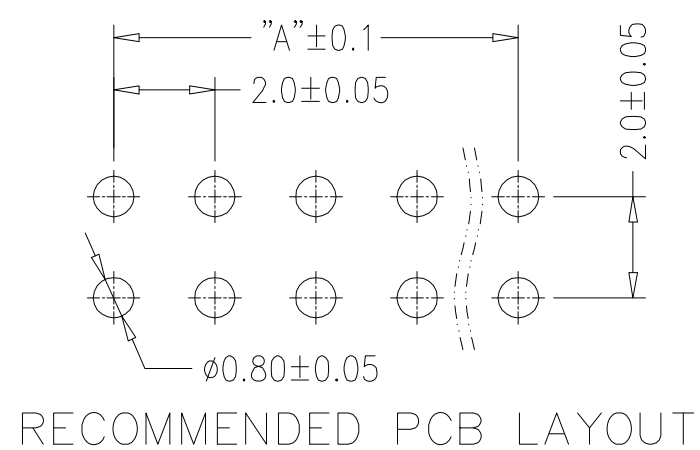
SPECIFICATIONS:

Applicable Wire: AWG#22~#28
 Voltage Rating: 250V AC/DC(rms)
 Current Rating: 3A
 Withstand voltage: 800V AC/Min(rms)
 Operating Temperature: -25°C~+85°C
 Insulation Resistance: 1000MΩ min.
 Contact Resistance: 30mΩ max.

MATERIAL:

Terminal: Brass
 Housing: PA46,UL94V-0

Poles	DIM.A	DIM.B
2x2P	2.0	5.9
2x3P	4.0	7.9
2x4P	6.0	9.9
2x5P	8.0	11.9
2x6P	10.0	13.9
2x7P	12.0	15.9
2x8P	14.0	17.9
2x9P	16.0	19.9
2x10P	18.0	21.9
2x11P	20.0	23.9
2x12P	22.0	25.9
2x13P	24.0	27.9
2x14P	26.0	29.9
2x15P	28.0	31.9
2x16P	30.0	33.9
2x17P	32.0	35.9
2x18P	34.0	37.9
2x19P	36.0	39.9
2x20P	38.0	41.9



REV.	REVISION RECORD	DATE	General Tolerance
A	Original	11/12/18"	LINEAR 0.0 ±0.25 ANGLE ±3°
B	Revised	02/14/22"	0.00 ±0.20
			UNIT: mm
			A4 NAME
			APPROVED KENNY
			CHECKED GRACE
			DESIGNER JINDAR

ARIBA TECHNOLOGY CO., LTD.

TITLE: 2.0Ph Wafer DIP Right Angle 5H

DWG.NO: **WG1XXPTE1281-44** REV. B

SCALE 1 : 1 SHEET 1 OF 1