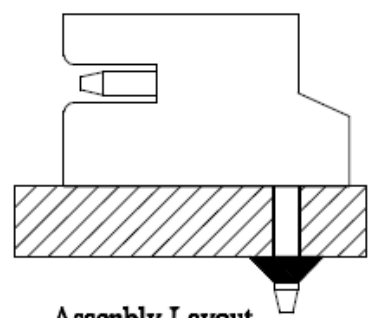
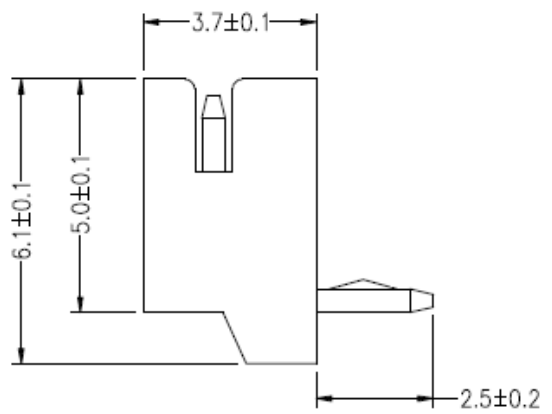
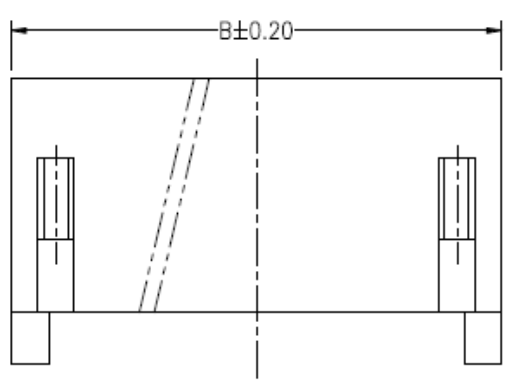
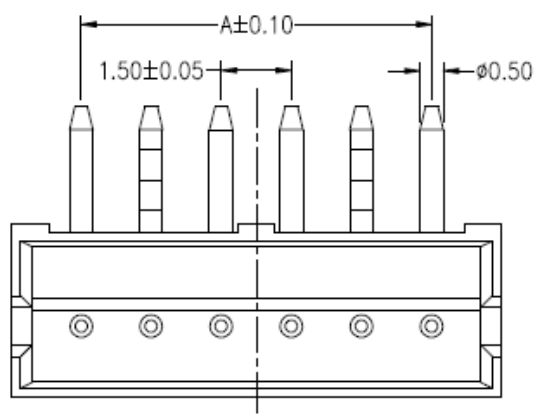


	1	2		3		4		5		6	7	8	9	10	11	12	13	14	15	
Pin No.	2	3	4	5	6	7	8	9	10	11	12	13	14	15						
DIM.A	1.50	3.00	4.50	6.00	7.50	9.00	10.50	12.00	13.50	15.00	16.50	18.00	19.50	21.00						
DIM.B	4.50	6.00	7.50	9.00	10.50	12.00	13.50	15.00	16.50	18.00	19.50	21.00	22.50	24.00						

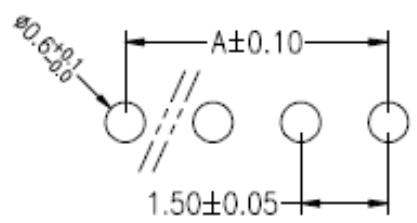


RoHS
Compliant

Assembly Layout

Ordering Information

WF **1** **XX** **PT** **15DK** **1- 44**
 1.5P Wafer Solder/PCB Total PIN Contact Plated Packing
 1.DIP RA 2.DIP VT 3.SMT RA PT: Tin 1:Bag
 4.SMT VT



P.C.B Layout

REV.	REVISION RECORD	DATE	General Tolerance		
A	Original	09/14/20**	LINEAR	0.0 ±0.25 ANGLE ±3° 0.00 ±0.20	
				UNIT: mm	TITLE: 1.5Ph Wafer SMT Right Angle 3.7H with Kick Pin
			A4	DATE	
			APPROVED	KENNY	DWG.NO: WF1XXPT15DK1-44 REV.A
			DESIGNER	ALLEN	
			DRAWN	JINDAR	SCALE 1 : 1 SHEET 1 OF 1

SPECIFICATIONS

- ◆ Applicable Wire: AWG#28~ #22
- ◆ Rated voltage: 50V DC,AC(rms)
- ◆ Rated Current: 1A (AWG #28)
- ◆ Withstand voltage: 500V AC/min.
- ◆ Working Temp : -25°C ~ +85°C
- ◆ Insulation resistance: ≥1000 MΩ
- ◆ Contact resistance: ≤20 mΩ

MATERIAL

- ◆ Housing: Nylon 46, UL94-V0
- ◆ Contact: Brass