

ORDER INFORMATION

TG 1124 X 2-81
 2.0P Terminal 2: Reel Packing
 P: Phosphor Bronze
 B: Brass

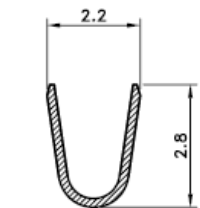
RoHS
Compliant

SPECIFICATIONS

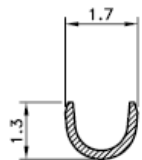
- Current Rating : 2A AC/DC
- Withstanding Voltage : 800V AC/minute
- Insulation Resistance : 1000MΩ min
- Temperature Range : - 25°C to + 85°C
- Contact Resistance : 20mΩ max

TERMINAL

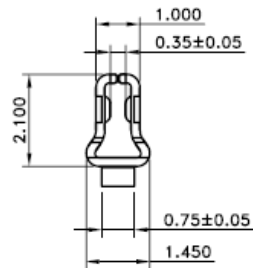
- Applicable Wires : AWG # 22 - 28
- Material : Copper, Tin Plated
- Thickness : 0.2mm
- Process : Normal
- 'Q' ty : 10,000 pcs./Reel



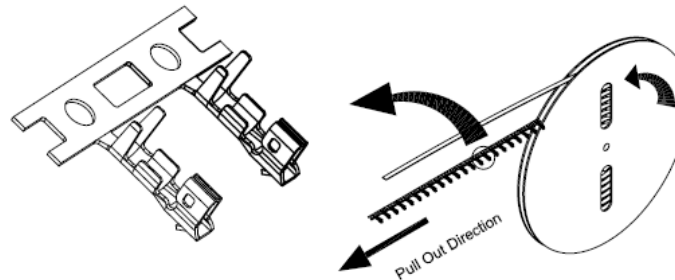
Section A-A



Section B-B



Section C-C



REV.	REVISION RECORD	DATE	General Tolerance			
A	Original	04/12/18	LINEAR	0.0 ±0.35 0.00 ±0.20		ANGLE ±3°
			UNIT:mm		TITLE: 2.0mm Pitch Terminal 5.7L DWG.NO: TG1124X2-81 REV. A	
			A4	NAME		DATE
			APPROVED	SUNNY		
			CHECKED	TED		
			DESIGNER	WING		SCALE 1 : 1 SHEET 1 OF 1