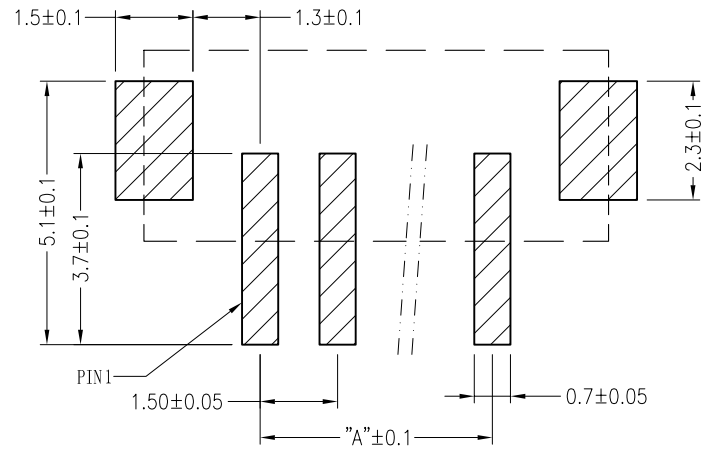
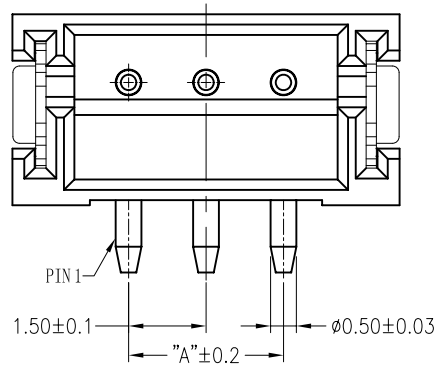


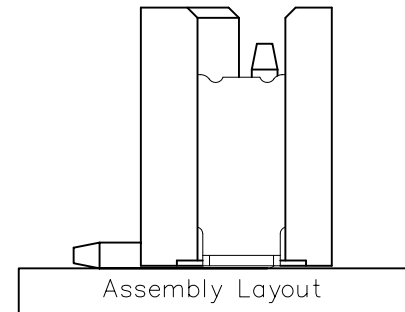
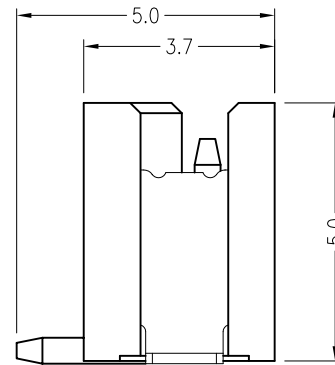
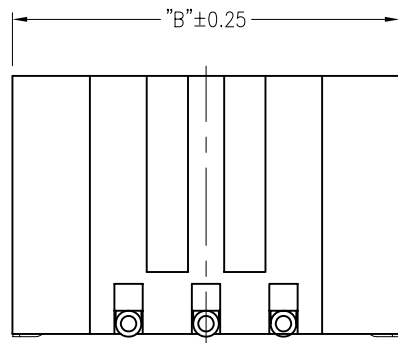
	1	2	3
A	Poles	DIM.A	DIM.B
	2	1.5	6.0
	3	3.0	7.5
	4	4.5	9.0
B	5	6.0	10.5
	6	7.5	12.0
	7	9.0	13.5
	8	10.5	15.0
C	9	12.0	16.5
	10	13.5	18.0
	11	15.0	19.5
	12	16.5	21.0
	13	18.0	22.5
D	14	19.5	24.0
	15	21.0	25.5
	16	22.5	27.0



RECOMMENDED PCB LAYOUT

**SPECIFICATION:**

- Voltage rating:  
AC, DC, 50V(rms)
- Current rating:  
1A (AWG #26)
- Withstand voltage:  
500V AC/minute
- Working Temperature:  
-25°C ~ +85°C
- Insulation resistance:  
≥ 500M Ω
- Contact resistance:  
≤ 20m Ω
- Material:  
Housing-PA9T,UL94V-0  
Terminal-Brass  
Pad-Phosphor Bronze
- Applicable Wire:  
AWG #26~ AWG #32



Assembly Layout

**RoHS  
Compliant**

**Ordering Information**

WF - 4 - XX - PT - 1501 - X - 44

1.5P Wafer	Solder/PCB	Total PIN	Contact Plated	Packing
	1.DIP RA		PT: Tin	1: Bag
	2.DIP VT			2: Tray
	3.SMT RA			3: Reel
	4.SMT VT			

REV.	REVISION RECORD	DATE	General Tolerances		
A	Original	11/22/16'	LINEAR 0.0 ±0.35 0.00±0.20	ANGLES ±3°	
				UNIT: mm	
			A4	NAME	DATE
			APPROVED	WENDY	
			DESIGNER	WHITE	
			DRAWN	ANGEL	
			TITLE: 1.5P Wafer SMT Vertical 5.0H		
			DWG.NO.: WF4XXPT1501X-44		REV. A
			SCALE	1 : 1	SHEET 1 OF 1

