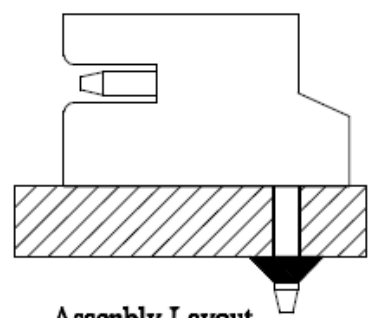
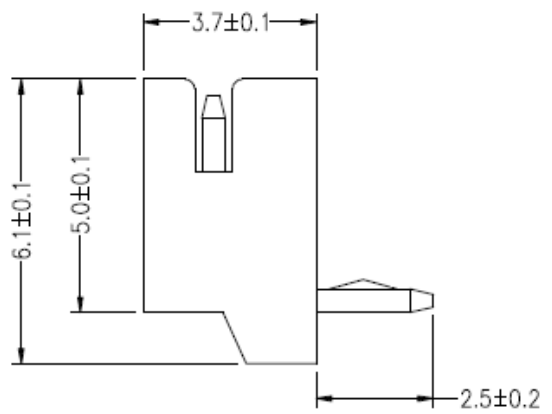
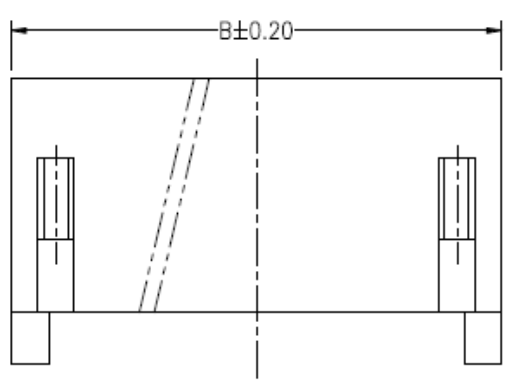
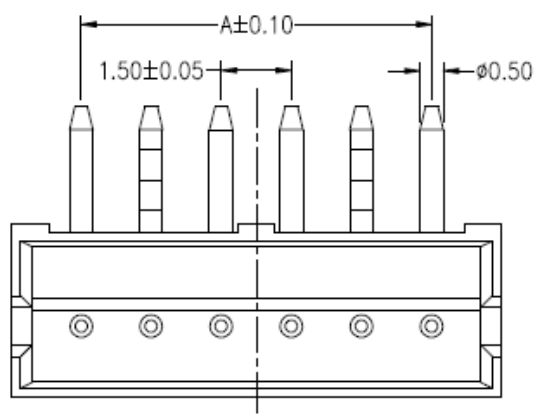


	1	2		3		4		5		6	7	8		
Pin No.	2	3	4	5	6	7	8	9	10	11	12	13	14	15
DIM.A	1.50	3.00	4.50	6.00	7.50	9.00	10.50	12.00	13.50	15.00	16.50	18.00	19.50	21.00
DIM.B	4.50	6.00	7.50	9.00	10.50	12.00	13.50	15.00	16.50	18.00	19.50	21.00	22.50	24.00

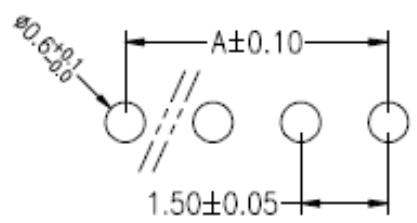


RoHS  
Compliant

Assembly Layout

**Ordering Information**

**WF**    **1**    **XX**    **PT**    **15DK**    **1- 44**  
 1.5P Wafer    Solder/PCB    Total PIN    Contact Plated    Packing  
 1.DIP RA    2.DIP VT    3.SMT RA    PT: Tin    1:Bag  
 4.SMT VT



**P.C.B Layout**

REV.	REVISION RECORD	DATE	General Tolerance					
A	Original	09/14/20**	LINEAR	0.0 ±0.25 ANGLE ±3° 0.00 ±0.20				
				UNIT: mm	TITLE: 1.5Ph Wafer SMT Right Angle 3.7H with Kick Pin			
			A4	DATE				
			APPROVED	KENNY	DWG.NO: WF1XXPT15DK1-44    REV.A			
			DESIGNER	ALLEN				
			DRAWN	JINDAR	SCALE	1 : 1	SHEET	1 OF 1

**SPECIFICATIONS**

- ◆ Applicable Wire: AWG#28~ #22
- ◆ Rated voltage: 50V DC,AC(rms)
- ◆ Rated Current: 1A (AWG #28)
- ◆ Withstand voltage: 500V AC/min.
- ◆ Working Temp : -25°C ~ +85°C
- ◆ Insulation resistance: ≥1000 MΩ
- ◆ Contact resistance: ≤20 mΩ

**MATERIAL**

- ◆ Housing: Nylon 46, UL94-V0
- ◆ Contact: Brass